

# Snowball Express

**Your Free Guide to Winter Fun  
in the Headwaters Region of Northeast  
Wisconsin**

**2012**



**Published annually by Pioneer Express - Crandon, Wisconsin**

**River Street**  
**Cafe**  
 BREAKFAST FRESH BAKERY  
 LUNCH

**Trackside Deli** **SUBS, PIZZAS**  
**CHICKEN & MORE**

FREE DELIVERY AVAILABLE **Gourmet Coffee Line**  
**OPEN 4 A.M.** Full Line of Beer, Wine & Liquor  
**LAKEWOOD SHELL** Name Brand Snowmobile Oil  
*New Selection of Seasonal Clothing*  
 Highway 32 - Lakewood, WI (715) 276-3663

**Meal Deal**  
**8" Sub with Regular Chips & 20 oz. Coke Product \$5<sup>99</sup>**

**AREA INFORMATION**  
 Forest County Chamber of Commerce  
 (715) 478-3450 or 800-334-3387  
 Pickerel/Pearson Business Association  
 (715) 484-3634  
 Wabeno - (715) 473-2217  
 Lakewood Area Chamber of Commerce  
 (715) 276-6500  
 Laona Chamber of Commerce - (715) 674-3007  
 Oconto County Tourism - 1-888-626-6862  
 Forest County Snowline - (715) 478-2024  
 Forest County Website: [www.visitforestcounty.com](http://www.visitforestcounty.com)  
 Oconto County Website: [www.ocontocounty.org](http://www.ocontocounty.org)

Snowball Express is published by the Pioneer Express,  
 located at 125 N. Lake St., Crandon, WI 54520  
 (715) 478-3640 or 1-800-234-2152

**IF YOU EXPERIENCE  
 AN EMERGENCY  
 PLEASE DIAL**

**911**



**HOTEL CRANDON**  
**Restaurant and Bar**

**Fine Dining at the Hotel Crandon!**  
**Chef Skippy Gardner will be preparing his kitchen masterpieces Every Saturday**

Located In the Heart of Crandon on Lake Ave. (Main Street)  
 RV PARKING BEHIND THE BUILDING!!

**Breakfast • Lunch • Dinner**  
**Cooked Fresh to Order**

**Carry Out or Comfortable Dining Room Service**  
**All With a Friendly Smile!**



**OPEN 7 DAYS A WEEK**

Call For Hours **715-478-2414**

Prime Rib 🍃 Wood-Grilled Steaks  
 Home-made Alfredo 🍃 Seafood  
 Plus Fine Wines, Draft Beer and Your Favorite Cocktails.

Serving Wisconsin's Greater Northwoods



**Renee Irish**  
Broker / Owner  
Website c21nwds.com



Northwoods Team, Inc.

108 N. Lake Avenue  
Crandon, Wisconsin 54520  
Cell (715) 216-1063  
Office (715) 478-3744  
Toll Free (877) 221-6937  
Email reneeirish@newnorth.net  
Each Office is Independently Owned And Operated

**ONE STOP SHOPPING!! Our Website has all Century 21 and Greater Northwoods MLS Listings!**

**Village Inn Laundromat**  
Pioneer Plaza, Crandon  
*Where You Can Do It All, Just Minutes Away:*  
*Do your wash- Pick up some snacks*

Single or Double Load Washers  
Large Capacity Dryers & Extractor Available  
Snacks, TV, Soap

**BIGGEST & CLEANEST IN THE AREA**  
OPEN DAILY 6:00 AM - 9:00 PM  
FIND US IN THE MIDDLE OF THE PLAZA  
RIGHT BEHIND THE GAS DEPOT, HWY 8 EAST

## 2011 WINTER EVENTS

- January 21 • Crandon Lions Club Fish-O-Ree & Winterfest  
• Tombstone-Pickerel Sno-Club Chill Feed & Ride-In (Pickerel)  
• Chute Pond Women's Sonwmobile Club Snow Dance
- January 27 • MS Ride In - Lily Snow Birds Club
- January 28 • Langlade Snow Birds County Ride In  
Sat. - Bowling Tournament Sun. - Raffle Drawings
- February 4 • Hiles Fisherie  
• Sugar Bush Sno-Mo-Wheelers Poker Run & Fun Day (Crandon)  
• Mountain Fire Dept. Fish-o-Rama (Mountain)
- February 11 • Wabeno Legion & Lions Fish-O-Ree (Trump Lake)  
• Lion's Club Pancake Breakfast (Pearson)  
• Polar Bear Jump In ( Pickerel)
- February 12-13 • Red Arrow Snowmobile Club Fish-A-Ree (Town Hall)
- February 19 • Townsend Firemen's Wives' Sweetheart Dance (Townsend)
- February 25-26 • Breed Sportsman Fish-o-Ree
- March 12 St. Patrick's Day Parade (Pickerel)
- March 24 • 4rd Annual Celebrate Spring Spaghetti Dinner - (Crooked Lake Community Center)

## FOUR SEASONS MOTEL



20 Units  
Cable TV  
Free Local Calls

Non-Smoking Rooms Available  
Snowmobile from your door  
In-Room Coffee & Refrigerators  
Ice & Microwave - Ample Parking

Gas & Groceries Adjacent  
Friendly - Clean - Comfortable

**304 W. Glen St.**  
**(Hwy. 8)**  
**Crandon, WI**  
**54520**



**CALL (715) 478-3377**  
**FOR RESERVATIONS ONLY**  
**CALL 1-888-81-MOTEL**

478-1010  
200 S Lake Ave.



Check Out  
Our Menu:  
LaFetta.com

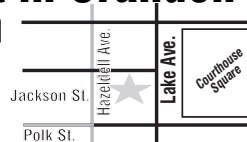
**Italian & American Foods**  
BUFFETS - BANQUETS - CATERING - TO GO's  
Arcade Room - Meeting Rooms - Hand Dipped Ice Cream

**Crandon's Finest Pizzas!!**  
**Serving Beer and Wine**

**Featuring Our Famous Saturday & Sunday  
Breakfast Buffet and Sunday Brunch Buffet**

**Located Right On The Trail!!**

**On Main Street in Crandon**  
Enter parking lot from  
**Hazeldell Ave.!**



**PLENTY OF PARKING!!!**

**Open 6 Days a Week**  
**Closed Mondays!**  
8:00 a.m. - 8:00 p.m. Daily · 7:30 a.m. - 8:00 p.m. Fri · Sun.  
Buffets 6 Days a Week Plus Full Menu

**We Deliver!**

## Kathy's Inn Bar & Grill

In beautiful downtown Argonne  
And the heart of the Nicolet National Forest!

Enjoy your favorite drinks in our unique Renovated Tavern!



**Great Food**

Featuring: Great Friday Fish Fry with choice of homemade Potato Salad, Potato Pancakes, French Fries & Coleslaw. Sandwiches, Shrimp Basket, Homemade Soup & Chili & More

MADE TO ORDER  
BREAKFAST 7:00 AM  
FRI. - SUN.  
OPEN AT 11 AM - MON. - THURS.

**ON THE TRAIL  
WITH AMPLE  
PARKING FOR SLEDS**

OPEN 7 DAYS A WEEK  
On Hwy 32 & 55 • 649-3392

## Main Street Ed's

Argonne, WI • 649-3810

Open 5 Days a Week at 11 a.m.  
(Wed. - Sun.)

**Daily Specials**

Saturday:  
Steaks  
& Prime Rib

*Home Made Pizza*

*Home Smoked Ribs*

**Home of the Argonne Burger**

**All food can be to go**



## The Gas Depot Convenience Store

Gas Pumps Open 24 Hours A Day  
(with Credit Card)

Snacks & Supplies You Can Use

On LMT Trail System  
by Lake Metonga



Conveniently located in Pioneer Plaza  
Hwy. 8 East • Crandon • 715-478-3000

## Smith Sport & Hobby

209 E. Pioneer St., Crandon • 715-478-1455

**Marcum Underwater Cameras & Vexilar Flashers**

**Full Line of Ice Fishing Equipment**

**LIVE  
BATT!**

Jiffy Ice Augers • Ice Shacks  
Rods • Reels • Otter Sleds



**BOWTECH**

Hunting • Fishing • Camping

Video Archery • Winter Sports • Snow Shoes  
Water Sports • Canoes • Kayaks • Pedal Boats  
Skateboards • Paintball Guns • CO<sub>2</sub> Fill Station

Bows & Archery  
Supplies

## CRANDON PHARMACY

101 N. Lake Ave., Crandon  
DOWNTOWN CRANDON

**Phone**  
(715) 478-3313

Paul E Linderud, R.PH.  
Owner.

- Stop In For Everyday Pharmaceutical Needs
- We Feature The Highest Quality Over-The-Counter Products As Well As Health And Beauty Aids.
- Every Day, All Greeting Cards Are 99¢. Large Selection of Sunglasses 2 for \$5.00 Or \$3.00 Each.
- Always Arriving New Fashionable Jewelry, Cards, and Gifts

We now accept all major credit cards, debit and check cards.

**Hours:**  
Mon. - Fri. 8:30 a.m. - 5:30 p.m.  
Sat. Pharmacy 8:30 a.m. - 12 noon  
Store 8:30 a.m. - 3 p.m.

## LAONA PHARMACY

Mill St., Laona, WI 54541  
ACROSS FROM LAONA STATE BANK

**Phone**  
(715) 674-2635

Paul E Linderud, R.PH.  
Owner.

- STATE-OF-THE-ART Computer System
- We Accept Most Insurance Plans
- We Are Medicare And Medicaid Certified

**Hours:**  
Mon. 9 - 12, 1 - 5, Tues. 9 - 12, 1 - 5  
Wed. 9 - 12, 1 - 5, Thurs. 9 - 1  
Fri. 9 - 12, 1 - 5



# Forest County VISITOR CENTER

**FOREST COUNTY CHAMBER OF COMMERCE**

**Forest County Visitor Center**

**116 South Lake Ave**

**Crandon, WI 54520**

**(715)478-3450 (800)334-3387**

**crandon@newnorth.net**

**www.visitforestcounty.com**

follow us on [Facebook.com/ForestCountyChamber](https://www.facebook.com/ForestCountyChamber)  
and [Twitter.com/ForestCounty](https://twitter.com/ForestCounty)



## LOG CABIN RENTALS

**Year Round**



Nestled in the Nicolet National Forest, the cabin is located near the Rat River. With an abundance of public land and lakes, the forest is a wonderful place to hunt, fish, hike, canoe, and cross-country ski. Also nearby are the Nicolet Golf Course,

2 casinos, Lumberjack Special steam train, grocery, gas & bait shops.

### Sleep On A Handcrafted Queen-Sized Bed

Everything from floors to ceilings has been expertly handcrafted, including beds, lamps, tables & cabinets. Built in 1998, the first cabin has a gas fireplace, bedroom, loft, spacious bathroom & living area. Sleeps four. Amenities include A/C, TV, VCR, satellite & fully equipped kitchen. Gaze at the stars through one of the skylights, or sit out on the porch.

### Rustic Romance

Cabin for two, whirlpool tub, wood fireplace & fully equipped kitchen.

**DOUBLE OCCUPANCY**  
**FRIDAY & SATURDAY TWO NIGHT MINIMUM**

## CAMP 20 SAWMILL

*Gary & Denise Smith*

*715-674-3814*

*Or Write 4534 Smith Lane, Laona, WI 54541*

**www.camp20cabins.com**

From Laona, Take Hwy. H East 2-1/2 Mi., Turn Right On Smith Lane,

**GIFT CERTIFICATES AVAILABLE**

# Water's Edge Lodge



On Beautiful Lake Lucerne - Look for Signs! • 4140 County Highway W • 715-478-1224

*The perfect blend of family & fine dining.*

**Open Monday, Tuesday & Wednesday at 4 p.m.**

**Thursday at 1 p.m. • Friday at 1 a.m. • Saturday, & Sunday at 11 a.m.**

**(Open Christmas Eve, Christmas & New Year's Day)**

We accept Visa, Mastercard & Discover

*Valentine's Day - Feb. 12th & 14th Steak & Lobster \$24.95*

**JUMP IN**

**JANUARY 28**

**Noon -**

**3:00 P.M.**

**Paddlewheel!**



## WEEKLY SPECIALS

**Thursday • Our Special Steak Night**

New York Strip - \$9.95 • Rib Eye - \$11.95  
Happy Hour 4-6:30 p.m.

**FRIDAY • Serving at 4:30 p.m.**

Haddock Fish Fry (All You Can Eat) - \$10.95

**Saturday • Our Famous Prime Rib**

**SUNDAY • Serving Dinners at 4:30 p.m.**

**Sat., February 4th - Sno Mo Wheelers  
Poker Run & Paddlewheel**

**Stop #88 on Forest County Trail Map on LMT 6 Trail**

**Your Connection on the LMT 6 to 100 Mile Snow Safari & Beyond**



# Pichotta's Pub & Grub

"Home of the Beaver Burger"



Brian & Maggie Pichotta  
4485 N. Branch St., Wabeno  
715-473-4314

Broasted Chicken - Friday Fish Fry  
Homemade Pizza - Great Sandwiches  
We also do catering!!

## The Wabeno Area Chamber of Commerce

For information on the Wabeno Area events  
and businesses call:

**715-473-2202**

# Snowmobilers! Heritage Hunt Club Lodge



Rent your own lodge only minutes from the  
100-mile Snowmobile Trail for the week or the  
weekend. Four bedrooms, two baths & a fully  
equipped kitchen

For information & reservations, call  
Heritage Hunt Club at:  
1-877-332-7268 or 1-715-674-7043

# The Knothole

Hwy. 32, Wabeno, WI  
OPEN 11 a.m. 7 Days a Week  
(715)473 - 3000



**Food  
Ice Cream  
Game Room**



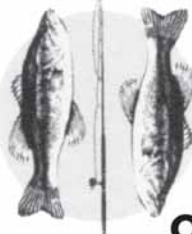
Dine In  
or  
Take Out!



**PIT STOP # 65**  
On the Scenic  
Lumberjack  
Memorial  
Trails

Easy Access Snowmobile Parking We Are Right on the Trail!!

# Beyer Bait & Tackle



Hunting, Fishing, Liquor,  
License, Camping and  
More.....

1880 Hilltop Ln.  
Wabeno, WI 54566

Owner Henry Beyer  
(715) 473-6907 Cell (715)889-1299



Hwys. 8 & 32, Laona  
674-7185

FEATURING...  
Daily Specials  
Homemade Soups  
Chili

Friday Fish Fry

Blue Gill • Walleye • Cod • Smelt  
Butterfly Shrimp • 2I Shrimp • White Fish



**Is your fishing gear outdated? Try Pintsch's Hardware for a complete line of ice fishing gear!**

We stock the latest in ice fishing equipment, from cameras to the latest fish finders, the newest and traditional tip-up designs, jig poles, baits, heaters, ice augers-including the propane powered auger. We stock jigs, minnow buckets, ice chisels, hat lights and everything the ice angler needs to be equipped.

**Don't forget our selection of new & used guns!**

**PINTSCH'S HARDWARE, INC.**

Hwy 32, Townsend  
715-276-6888

**True Value**  
START RIGHT. START HERE.™

Store Hours: Mon-Sat 7-6, Sun 8-1

**Karla's Kountry Kitchen**

Hwy 32, Townsend, WI 715-276-7480

**Ho-Made Pies  
Rolls  
Specials  
Friday Fish Fry**



Closed Mondays



**TRAILS MOTEL**

*In the heart of the Nicolet National Forest*

**Easy access to miles of the best Snowmobile, ATV & Cross-Country Ski Trails**

- Trail maps available • Large parking area for trailers
- Great ice fishing on many nearby lakes
- Close to restaurants & gift shops
- 5 minutes north to casino

**FREE WIFI, Morning Coffee & Casino Coupons**

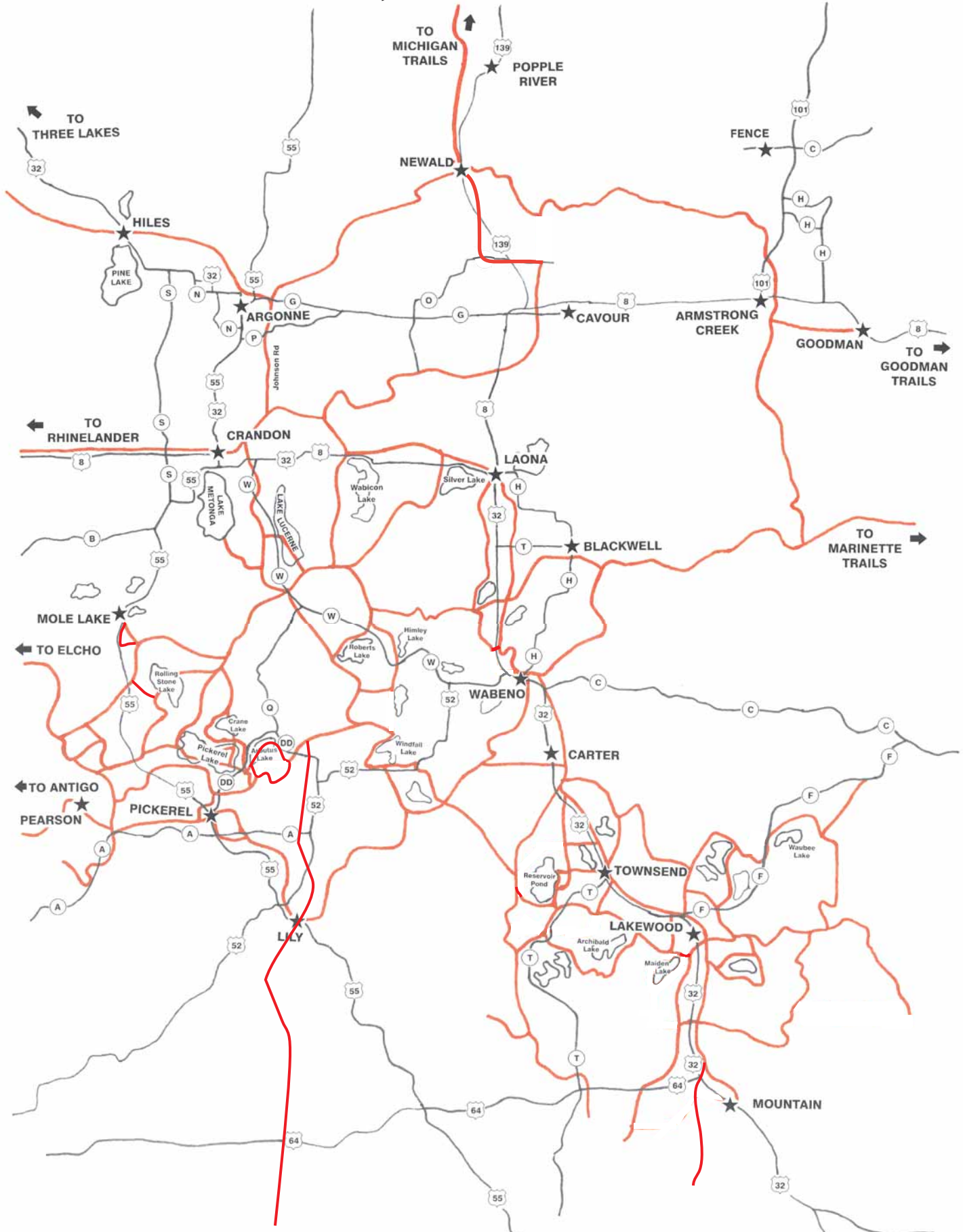
**(715) 276-7576**

Located West of Hwy. 32 & Cty. T in Townsend, WI



# AREA SNOWMOBILE MAP

Includes Paul Bunyan/Red Arrow Snowmobile Clubs, Lumberjack Memorial Trails, Tombstone/Pickerel Snowmobile Club, 100 Mile Snow Safari and Black Bear Snowmobile Club



MORE DETAILED MAPS AVAILABLE AT AREA PIT STOPS AND SPONSORS



# Presenting the People Who Make Snowmobiling Possible!



## Lumberjack Memorial Trails, Inc. (LMT)

For the past 36 years, the LMT has promoted the sport of snowmobiling in Forest County. The club is equipped with two state-of-the-art Ultimate Groomers and two Ultimate Drags. The Ultimates are equipped with communication signals and phones.

The LMT is connected with the 100 Mile Snow Safari, the Tombstone Pickerel trail system, the Lily Sno Bird trails and the Townsend Red Arrow trails. The trails are well-marked and safe, and there are numerous pit stops to provide fuel, food, refreshments, or directions.

For snow and trail conditions, contact us at our website: [www.lumberjacktrails.com](http://www.lumberjacktrails.com) or by email: [lmtsnow@ez-net.com](mailto:lmtsnow@ez-net.com)

The LMT is always seeking members who would like to be involved in promoting snowmobiling, and they welcome you to give them a call at: Dave 715-478-2333.

## Sugar Bush Sno-Mo-Wheelers

When founded in 1983, this club had only 12 members. In 2007, the membership topped the 100 mark. The club holds a Poker Run and Fun Day on the first Saturday of February. This year the event falls on the 4th of February. The hands for the Poker Run are the best 5 out of 7 cards. Each card will cost \$1.00. There are games, drinks and the players hand in their cards at Beachside on Lake Metonga, Crandon. Money collected from the Poker Run is spent on the trail system.

Jack Kloss can be contacted for club information and trail updates at 478-3425. The club officers are: Jack Kloss, president; Mark Kinehart, vice-president; Lisa Klind, secretary and Darlene Lathrop, treasurer.

## Lakewood's Paul Bunyan Riders

The Paul Bunyan Riders boast over 170 members. The club grooms a total of 120 miles of trails, of which only 73 miles is state-funded. The system connects with Mountain to the south, Townsend Red Arrow to the north, and Silvercliff and Crooked Lake to the east. The Paul Bunyan Riders are members of the A.W.S.C. (Association of Wisconsin Snowmobile Clubs).

The Riders hold a unique event the last weekend in January, called Snow Fun Weekend. This year, the event will be held on Jan. 28 & 29. On Saturday, they will hold a bowling tournament in the snow between local rivals. Food, fun and refreshments will be available. The event will be at the Lakewood Town Hall.

The first weekend in October we hold a Landowner's Appreciation and membership drive. Free food, raffles and fun!

The president of the Riders is Dave Thomson; vice-president, Hank Lipinski; treasurer, Mary Kay Thomson; secretary, Pam Butler and trail master is Kurt Butler.

For up-to-date snow conditions, log on to [www.4upnorth.com](http://www.4upnorth.com) or call 715-276-3055.

## The 100 Mile Snow Safari

The 100 Miler is a big loop that has grown from its original 100 miles to a whopping 160 miles. It is suggested that only physically fit people try to make the run in a day, and riders are urged to spend a night on the trail and make the trip in two days. Touted as the longest loop in the snow belt, the trail is groomed with two Tucker Sno Cats, one Case tractor and three Trail Master drags.

The 100 Miler is serviced by dedicated people who are the many members whose businesses make up the pit stops.

For more information on the mighty 100 Miler, call John "Muskie" Aschenbrenner at Johnnie's Resort, 715-674-2762 or for trail conditions contact the 100 Miler website: [100milesnowsafari.org](http://100milesnowsafari.org).

## Black Bear Snowmobile Club

The BBSC, with its members and sponsors keep the trail from Argonne to Newald in good repair, and also maintains the trail from Hiles to Crandon and west, along Hwy 8 to the county line, a distance of 41 state-funded miles.

The BBSC grooms with two tractors and drags to keep the trails smooth and usable. Donation cans are in place at various businesses, and all contributions to the club are very welcome and needed.

If you have questions about the club, call Dick Abney at 715-478-2175.

## Tombstone-Pickerel Snowmobile Club

The Pickerel-Pearson area is privileged to have the second largest snowmobile club in the State of Wisconsin, with over 275 members. Tombstone-Pickerel Snowmobile Club continues to grow and is looking for people to join and work for the club. We have three New Holland tractors, two of which are on tracks, which are driven by some 15 groomer drivers.

The club, which is made up of 100% volunteers, does the brushing, grading and trail work in the summer to ease the curves and hills. A few of the trails have been changed to make them safer at road crossings. The club has a new trail on railroad grade from White Lake to Forest County and Mole Lake Sokaogon Chippewa Community.

All membership and fundraising money goes directly into buying new equipment, maintaining present equipment, improving the trails and contributing to various snowmobile-related organizations.

The club holds its annual snowmobile safety class in early December. The regular monthly meetings are held on the second Monday of the month at the clubhouse on Cty. DD in Pickerel. We will hold our annual Winter Chili Ride-In & Poker Run on January 14 at 2:00 p.m. with food, refreshments and raffles. Music By Jagged Highway from 5-9.

The officers of the club are Steve Bailey, Trail Master; Mary Schmitzer, Secretary; Sue Wosniack, Treasurer; Bryan Burkhardt, Vice-President; and Dan Henningfeld, President. For trail conditions or club events, find us at [www.tombstonepickerel.com](http://www.tombstonepickerel.com).

## Red Arrow Snowmobile Club, Inc.

Townsend's Red Arrow Snowmobile Club links to the Paul Bunyan system, the Tombstone Pickerel trails, the LMT, the 100 Miler, Langlade/Lily trails and the Charlie Brown system.

The club is constantly raising money to keep the trails groomed and the equipment operating smoothly. The Red Arrow will be holding their 36th Annual Fish-A-Ree in February at the town hall, with cash prizes for the largest fish and raffle tickets are available in the area.

The officers of the Red Arrow Snowmobile Club are: John Brantmeir, president; Tim Brooks, vice-president; Pat Harrison, 2nd vice-president; Jeff Kroll, trail boss; and Mary Stehula, secretary; Jim Weyers, treasurer; Dan Pries, Director Ron Popp, Director; Clint Aderholdt, Director.



# 4 Seasons Family Diner

(715)276-6020

Hwy. 32 • Lakewood (across from the clinic)

Closed Tues. & Wed. • 6 a.m. - 1 p.m.

## Breakfast All Day

### Homemade Soup

**\*Access to the Snowmobile Trail\***



# MULLIGAN'S

## Sports Bar & Grill

16707 Highway 32  
(1 mile south of Lakewood)  
715-276-3125

Homemade Pizza • Chicken Wings  
Wraps • Sandwiches • Burgers  
Friday Fish Fry

OPEN 7 DAYS AT 11:30 A.M.  
Carry-outs Available

Right on the  
Trail



**Make your own trails!**



# LAKWOOD

motorsports

POLARIS



YAMAHA



can-am

17168 St. Mary's Rd. • Lakewood  
(715) 276-7067  
www.lakewoodmotorsports.com

ski-doo.



# WAUBEE Lake Lodge

Lakewood, WI  
18398 Waubee Park Ln. • Lakewood  
715-276-6091 • 1-800-4WAUBEE  
www.waubeelodge.com

## Our Amenities Include:

- Great Ice Fishing
- On-Site Access to ATV & Snowmobile trails
- Snowshoeing
- Ice Skating
- Banquet & Meeting Facility
- Free Wi-Fi
- All Sports Channels
- Exercise Room
- Snowmobile Rental

**Open 7 Days a Week • Dinner at 4 p.m. Daily**

**Lunch is Seasonal  
During the Week**

**Serving Breakfast & Lunch  
on Saturday & Sunday**



**NOW  
RENTING**

**SNOWMOBILES!!!**

**Gas Available On Premises • Great Room Rates!**

**United Country Land North Realty**  
**Find Your Freedom™**

We specialize in rural and recreational properties throughout Northern Wisconsin. If you are looking for that special piece of Northwoods property or want to sell the one you have, give us a call, stop in, or check out our website at [www.pickerelwirealestate.com](http://www.pickerelwirealestate.com). We would be happy to help you. In the meantime, ENJOY to Northwoods!

N9194 Hwy 55, P.O. Box 126 Pickerel, WI 54465  
 Phone: 715-484-2345 Fax: 715-484-3456  
 email: [info@landnorthrealty.com](mailto:info@landnorthrealty.com)  
 Each Office Independently Owned & Operated




**Jardine's Trailside Inn Motel**  
 (Your Home Away From Home)

**WELCOME SNOWMOBILERS!!**

**WINTER RATES**

[www.jardinestrailsideinn.com](http://www.jardinestrailsideinn.com)  
**(715) 484-3045**  
 N9881 Hwy 55 • Pearson, WI

**NEW OWNERS • MANY NEW IMPROVEMENTS**



**ADAM'S MOBILE MARINE SERVICE LLC**  
 PICKEREL, WI  
 "YOU DON'T HAVE TIME FOR DOWN TIME!"

**SERVICE AT YOUR LOCATION  
 FOR LESS COST THAN MARINA CHARGES!**

**FULL ON SITE SNOWMOBILE & ATV SERVICE** • Parts & Repair on All Types of Watercraft  
**FULL LINE OF PARTS & ACCESSORIES** • Snowmobile & ATV servicing  
 • Accessory installation • Tune ups & winterizing

**CALL ADAM JUSTMAN @ 715-219-1152**  
 For Info Or Appointments [adam.justman@gmail.com](mailto:adam.justman@gmail.com) • Fully Insured

COME SEE THE WILDLIFE SCENE AT... **484-3211**

**PIT STOP #5 ON THE  
 TOMBSTONE-PICKEREL  
 SNOWMOBILE TRAIL**

5 Miles South Of The  
 Mole Lake Casino  
 On Hwy. 55, Pearson, WI

Open at 10 am Saturday & Sunday during  
 Snowmobile Season for Breakfast & Lunch

**Supper Club - Catering**  
 FINEST OF DINING

**Prime Rib Every Night**  
**Fish & Chicken Fri.**  
**California Prime Rib Sat.**  
**The Best Of Sunday Brunch**

**HILL'S STILL**





# ST. PATRICK'S DAY PARADE PICKEREL



**Come celebrate St. Paddy's Day in Pickerel on March 12. The only St. Patrick's Day parade in the area can always use spectators and entrants. It's a fine day for a party, with plenty of corned beef and cabbage and barrels of green beer!**

**March 17,  
 2012  
 Rain Or Shine**



**Mikkelson's**  
**Walleye Lodge Restaurant, LLC**  
 Rollingsstone Lake - Pearson, WI  
 Serving Sandwiches & Homemade Pizza Daily (except Mon. & Tues.)  
 Serving Dinners Fridays 5-10 p.m. & Saturdays 5-9 p.m. **Tombstone Pickerel Pit Stop #11**  
 Bar Open Wed. - Fri. 4 p.m. ~ Sat. & Sun. 2:00  
**CLOSED MONDAYS & TUESDAYS**  
 Gas - Liquor - Food  
**NEW YEAR-ROUND CABINS**  
 Home of the Pine Tunnel Trail  
 Call (715) 484-3333



**SCHAEFER'S**  
**COUNTRY STORE**  
 Videos & DVDs  
 Groceries & Bakery  
 Bait & Gas Beer & Liquor  
 Free Maps & Visitor Information!  
**Tombstone Pickerel Pit Stop #22**  
 Pearson  
 Hwy. 55 - Across from Hill's Still 484-5804



**SCHROEDER'S**  
**AUTO SALES & SERVICE**  
 Sales, Service & Repair  
 Hwy. 55 • Pearson, WI  
 Licensed A/C Service  
 24 Hour Towing  
 Snowplowing  
 We Also Service All Makes & Models of RV's  
 1,000's of Accessories Available  
 Electrical/Mechanical  
 Winterizing/Summerizing • Hitches  
 Wheel Bearing Service  
 Pick up & Delivery Available  
 715-484-4131  
 Call for your appointment today!!  
 Save this ad  
 for **\$10.00 off** your next service or purchase  
Limit one per customer, 25.00 minimum purchase



Ice fishing is popular with everyone up north!



**MSM MOTOR SPORTS MARINE, LLC**  
 Sales & Service N10306 State Rd. 55  
 New & Used Pearson, WI 54462  
 Financing available (715) 484-2106  
 www.motorsportsmarine.com  
**SALES & SERVICE New & Used**  
 • Repairs to all Major Brand Snowmobiles & ATV's  
 • Used Snowmobiles  
 • Accessories  
 • Helmets  
 • Consignment Snowmobiles & ATV's  
**BROKE DOWN?**  
 We Do Our Best To Get You Back On The Trail The Same Day!  
**SNOWMOBILE RENTALS**  
 WEEKLY & WEEKDAY RATES AVAILABLE  
 24 Hour Days, Call For More Information  
 Hours: Tues., Wed., Thur. 9-5, Fri. 9-7, Sat. 9-3, Sun. 11-3, Closed Mon. until April 15.  
**Tombstone Pickerel Pit Stop #17**

**28th Annual Sugar Bush Sno-Mo-Wheelers**  
**POKER RUN**  
 GAMES • FOOD • BEVERAGES & Fun Days  
**COME BY SNOWMOBILE, CAR, OR TRUCK!**  
**Saturday, February 4th, 2012**  
 Tickets \$1.00 each  
 Available one week prior to the Poker Run at participating pit stops.

**2011 PARTICIPATING STOPS**

<b>CRANDON AREA</b> May's Bar Duck's Bar Pack Em Inn Hansen's Double Top Pizza Water's Edge Lodge Beachside	<b>LAONA</b> Double Buck Johnnie's Resort Danz Bar T-Bob's	<b>WABENO AREA</b> Pichotta's Pub & Grub Backhaus' Sportsmens Retreat Wildfall Inn Rockin' Robin
<b>ARGONNE</b> Kathy's Inn Main Street Ed's	<b>MOLE LAKE</b> Junior's Saloon	<b>PICKEREL</b> Schuh's Sportsmen's Sunset Bay Resort Pickerel Point Resort Final Lap Frog Alley

**POKER RUN ENDS AT**  
**Beachside Bar & Grill, Lake Metonga**  
**100% OF THE PROCEEDS FROM THE**  
**POKER RUN BENEFIT TRAIL MAINTENANCE.**  
**RULES**  
 Best 5 out of 7 cards make a hand • Must be from 5 different pit stops.  
 Draw your own hand at Wild Rose • All hands must be turned in by 5 p.m.

**Mark Brockway**  
**Builder**  
 Remodeling, Additions, Siding,  
 Roofing, Windows and Doors  
 Fully Licenced and Insured  
 Free Estimates (715) 478-2693  
 10974 Old 8 Road  
 Crandon, WI 54520



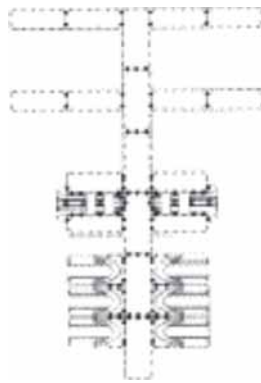
# EZ Dock



**The Last Boat Dock  
You'll Ever Need!**  
Floating Dock System  
Drive On Personal  
Water Crafts  
Boat & Dock Lifts

*Design It  
How You Want It*  
EZ DOCK

8227 Cty. DD - Pickerel, WI 54465



Call for a Free Brochure

**715-484-2277**



## Elite Automotive & Accessories

Complete Auto & Boat Upholstery, Convertible  
Tops, Carpet, Headliners, ATV, Motorcycle &  
Snowmobile Seats Snowmobile & Lawn Mower  
Repair, Window Tinting, Auto Mechanics Including:  
Tune-ups, Brakes, Exhaust & Diagnostics,  
Plus Embroidery, Vinyl Graphics, Signs, Stickers.

### OIL CHANGE & LUBE WHILE YOU WAIT

305 E. Pioneer St.  
Crandon, WI 54520

**715-784-6046**  
EliteCrandon@aol.com



## Firelite Lodge

BOB & CANDY

Hwy. 55 to DD in Pickerel to South Shore Dr. • Ph. (715) 484-4212

### Nightly Specials:

**Thursday: Broasted Chicken**  
**Friday: Fish Fry**  
**Poor Man's Lobster**  
**Saturday: Prime Rib**

Dining Room Hours: 5 - 9 p.m.  
Bar Opens At 4 P.M.  
We accept Mastercard & Visa



Tombstone  
Pickerel  
Pit Stop #43

## WHITE WATER-NORTH REALTY, LTD.

✓ THE RIGHT CHOICE

ANTIGO, WI 54409 • 888-554-5106  
www.whitewater-north.com



**CRANE LAKE** - Updated 2 BR w/fireplace enhanced with knotty pine interior. Access to Pickerel Lake. **\$149,000**



**BIG TWIN LAKE** - 3 BR, 2 BA home by the 9th hole of Maplewood Golf Course. Patio doors open to large deck w/view of Big Twin Lake. **\$234,900**



**9610 PICKEREL LAKE RD** - Updated 2 BR home w/fireplace on 22 acres. It has woods, pond, shed, garage and carport. **\$132,000**



**701 5TH AVE.** - Large two-story building with 12,660 sq. ft. Second level has 20+ rooms. Corner of Hwy. 45 & 5th Ave. Unit one rent is \$600 plus utilities. **\$175,000**



**3490 STATE HWY. 32, S-J&W HAM LAKE CAMPGROUND** - 18 acres with 500' sand frontage on private lake. 43 sites, 30 with metered hook-ups. Shower house/ laundromat. Miniature golf course, playground, 4 BR home, 30'x40' pole building with heated shop. Store with game room. **\$295,000**

↑ BUSINESS OPPORTUNITIES ↓

**TOWN OF AINSWORTH** - Two nicely wooded 10 acre parcels near Langlade County land. **\$29,900 each**

**NEAR PICKEREL LAKE** - Two wooded building lots. 3.83 and 4.38 acres. **\$24,000 and \$27,400**

**TOWN OF NASHVILLE** - Timbered 40 acres adjoins timberland. **\$84,000**

**SUNFISH LAKE** - Approximately 750' frontage with a nice wooded building site. Nicely wooded 57.4 acre parcel that adjoins Langlade County. **\$205,000**

**PICKEREL LAKE** - Nicely wooded lot on east side of lake with 100' frontage located on dead-end road. Ideal lot for walk-out basement. Access to Crane Lake. **\$149,900**

**CRANE LAKE LOT** - 100' prime sandy beach frontage. Enjoy sunsets. Includes cabin. **\$150,000**

**TOWN OF NASHVILLE** - Two 1.5 acre lots between Crystal Lake and Pickerel Lake in Forest County in excellent recreational area. **\$30,000. If sold separately, the price is \$19,500 each.**

**TOWN OF LINCOLN** - Private 4.1 acre parcel on back waters of Horseshoe Lake. Nicely wooded lot to enjoy wildlife. **\$20,000**

# Wolff's River Inn

**Steak Seafood Chicken**

**Full Service Bar**

**SERVING DAILY SPECIALS  
WEDNESDAY THROUGH SUNDAY  
AT 5 P.M. - OPEN AT 4 P.M.**

**Friday Serving at 4 p.m.**

**Serving Sandwich Specials**

**Saturday & Sunday 11 - 4 p.m.**

**Full Menu at 5:00**



**Welcome  
Snowmobilers**

**Closed Monday  
& Tuesday**

**Hwy. K, Post Lake  
275-3902**

**SUBS, PIZZAS  
CHICKEN  
& MORE**

FREE DELIVERY AVAILABLE

**OPEN 4 A.M.**

Gourmet Coffee Line

Full Line of Beer, Wine & Liquor

Name Brand Snowmobile Oil

New Selection of Seasonal Clothing

**TOWNSEND  
SHELL**



(715) 276-3616

Highway 32  
Townsend, WI

**Meal Deal**

**8" Sub with Regular Chips  
& 20 oz. Coke Product**

**\$5.99**



Playing in the  
snowy Northwoods

**THERE IS  
STILL TIME!  
GET YOUR PLOW NOW!**

Let us do your **BOSS** Snowplow's Annual Checkup!

- |  |  |
|--|--|
| Change the hydraulic fluid                         | Check the plow cylinders, hoses & pump for leaks |
| Grease important wear points                       | Make sure all functions work properly            |
| Clean, inspect & grease all electrical connections | Check the push beam adjustment                   |
| Check tightness on all nuts & bolts                | Check the plow light alignment                   |

Maintenance now saves breakdowns later



**SNOW'S ABOUT TO FLY.**

BOSS Power - v XT with the all - new SmartLight™ 2.



bossplow.com

PUSHING THE EDGE

**Don's Auto Service**  
Hwy 45 South, Antigo  
715-623-7313



**CERTIFIED  
EXPERIENCED  
PROFESSIONAL  
PET GROOMING**

Graduate of the  
"Academy of Animal Arts Pet Grooming"  
Largo, Florida

**We groom all breeds & sizes, dogs & cats**

**WE SPECIALIZE IN:**

Breed specific grooms • Geriatric Grooms  
Puppy's First Visit to the Grooming Salon

*We operate in a clean, sterile, enjoyable one-on-one spa like atmosphere.*

*Our products are top of the line, chemical free  
and are formulated for skin & coat specific conditions.*

**SERVICES OFFERED:**

Brushing & Combing • Dematting • Bathing • Hand Drying  
Hand Scissoring • Clipper Work • Nail Trimming • Ear Cleaning  
Coat & Skin Conditioning • Flea Dipping • De-Skunking • Massage

*We offer free consultations in the care & maintenance of your pets.*

*Gift Certificates - Pick up & Delivery Available*

**Please call for pricing and/or appointments at (715)478-2129**  
**Our location is: 4989 West Shore Drive**  
**- north shore of beautiful Lake Lucerne, 3 miles east of Crandon -**

**Hayes Metals LLC - Sales and Service**

305 N Blvd., Crandon, WI • 478-3528 • M-F 8-5 • Sat. 8-12

Jonsored-Stihl Chainsaws, Trimmers,  
Blowers, Tillers, & Accessories

ATV & Snowmobile Repairs,  
Parts & Accessories  
Snowblowers

Lawn Boy - Toro - Wheelhorse  
Lawnmowers & Tractors

Specialized Welding, Starter &  
Alternator Rebuilding  
General Small Engine Repair

RACEWEAR, CLOTHING & GEAR

dhayes02@newnorth.net



Find us on  
Facebook

Home Standby  
Never be  
Without Power!

**GENERAC**



- Runs off your natural gas or L.P. in your house.
- Senses power outages and starts automatically.
- Peace of mind when on vacation or just want security.
- We offer complete **SALES, INSTALLATION & SERVICE.**

**Laona Machine Supply**

4902 Hwy 8 • Laona, WI 54541  
877.674.3909 • Fax 715.674.2607  
www.laonamachine.com

# MAKE YOUR ESCAPE

Searching for huge jackpots, delicious dining, or just a place to relax and unwind? The possibilities are endless at Potawatomi Carter Casino Hotel. Let us dazzle you with table games, bingo, and the latest slot machines to hit the market. Plus great entertainment and exciting promotions. Then wind down in a suite with a whirlpool, indoor pool, hot tub and more. Plan your next gaming experience and Make Your Escape to Potawatomi Carter Casino Hotel, nestled in scenic Northern Wisconsin.



[cartercasino.com](http://cartercasino.com) | 1.800.487.9522

*20<sup>th</sup> Anniversary*  
**POTAWATOMI**  
CARTER · CASINO · HOTEL